



Beaufort County Public Works
Stormwater Infrastructure
Project Summary

Project Summary: St. Helena Island Tree Removal
Vineyard Point Road, Hand Drive, Captain Rojas Road First
Coleman Road

Activity: Routine/Preventive Maintenance
Duration: 09/12/19-10/28/19

Narrative Description of Project:

Removed fallen trees from roadside.

2020-322 / St Helena Island Tree Removal	Labor Hours	Labor Cost	Equipment Cost	Material Cost	Contractor Cost	Indirect Labor	Total Cost
AUDIT / Audit Project	1.0	\$21.79	\$0.00	\$0.00	\$0.00	\$0.00	\$21.79
DEBREM / Debris Removal - Jobsite	117.0	\$2,567.59	\$533.27	\$182.82	\$0.00	\$1,019.52	\$4,303.20
HAUL / Hauling	39.0	\$876.45	\$552.24	\$466.17	\$0.00	\$533.54	\$2,428.40
2020-322 / St Helena Island Tree Removal Sub Total	157.0	\$3,465.83	\$1,085.51	\$648.99	\$0.00	\$1,553.06	\$6,753.39
Grand Total	157.0	\$3,465.83	\$1,085.51	\$648.99	\$0.00	\$1,553.06	\$6,753.39

(No Pictures Available)



Project: St. Helena
Island Tree
Removal-
Vineyard Point
Road
Map #1

Activity: Routine/
Preventive
Maintenance

Project #:
2020-322

Township/SW Dist:
St. Helena Island/8

Completed:
October 2019

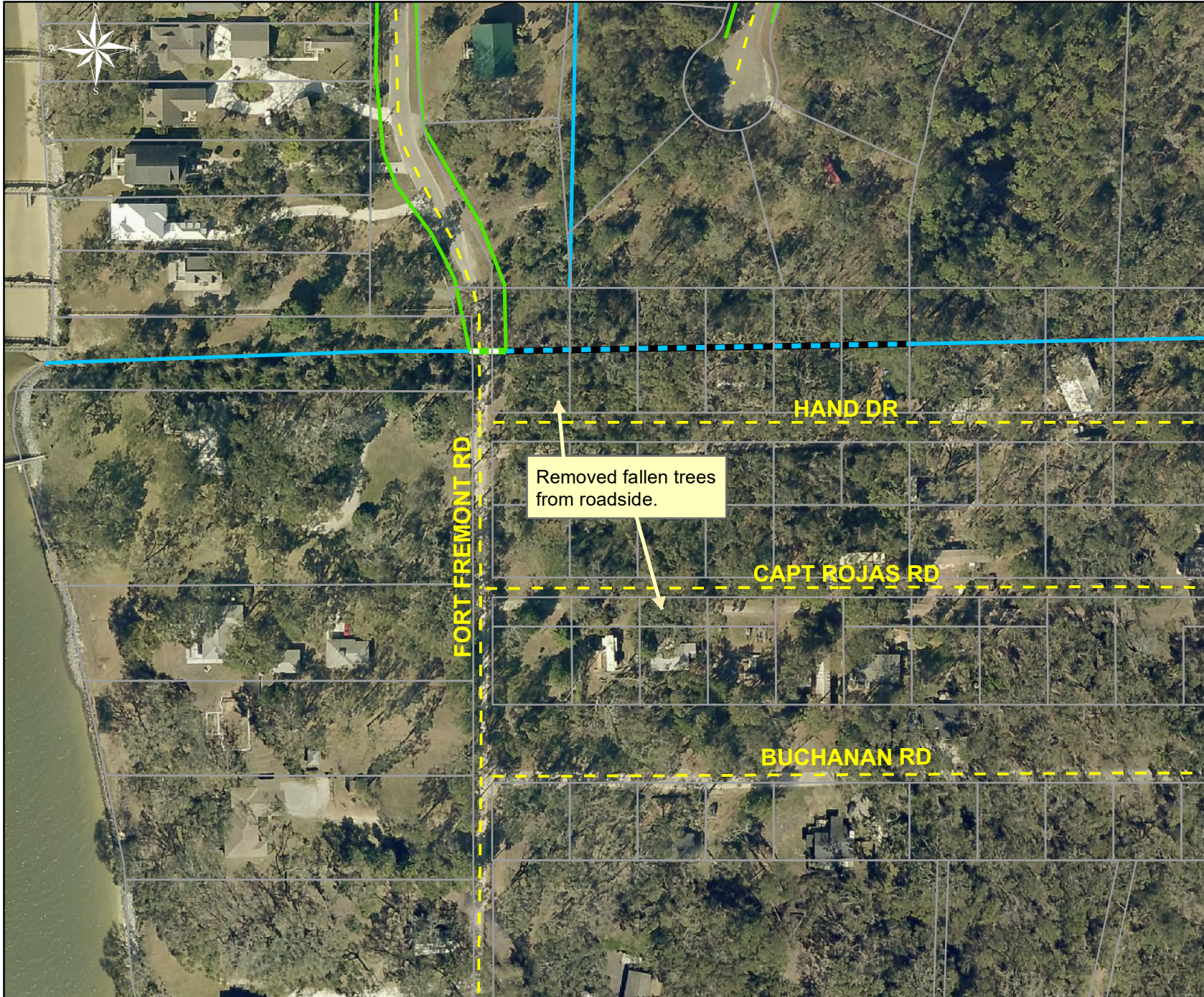
Legend	
Drainage Type	
	Access Pipe
	Bleeder Pipe
	Channel Pipe
	Channel
	Stream
	Crossline Pipe
	Driveway Pipe
	Lateral
	Lateral Pipe
	River
	Road Pipe
	Roadside
	Roadside Pipe

0 40 80 160 240 320
Feet

1 inch = 170 feet

Prepared By: BC Stormwater Management Utility
Date Print:01/21/20

File:C:\project summaries map/St. Helena Island Tree Removal- Vineyard Point Road Map #1_2020-322



Project: St. Helena Island Tree Removal- Hand Drive and Capt Rojas Road Map #2

Activity: Routine/ Preventive Maintenance

Project #: 2020-322

Township/SW Dist: St. Helena Island/8

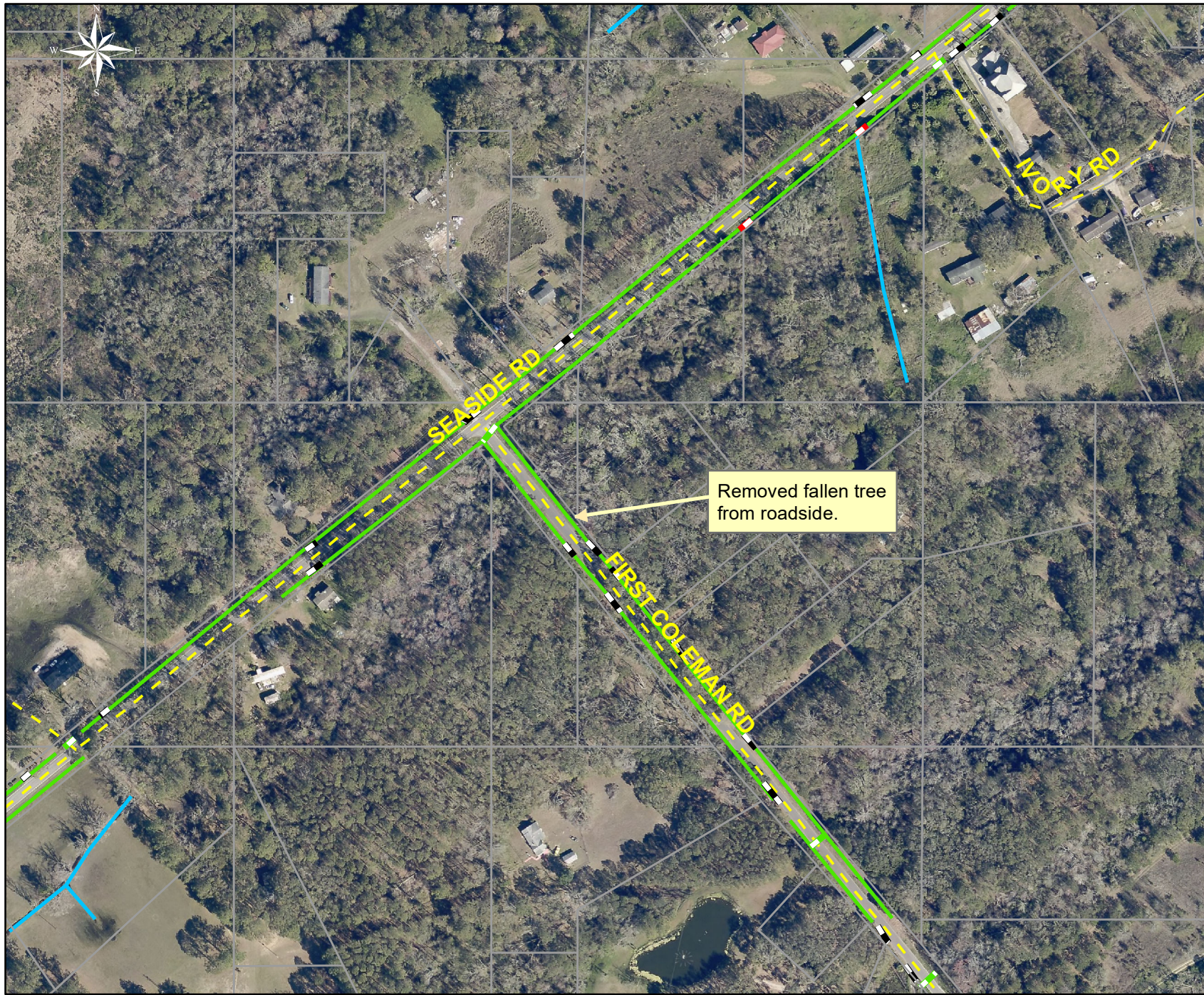
Completed: October 2019

Legend	
Drainage Type	
	Access Pipe
	Bleeder Pipe
	Channel Pipe
	Channel
	Stream
	Crossline Pipe
	Driveway Pipe
	Lateral
	Lateral Pipe
	River
	Road Pipe
	Roadside
	Roadside Pipe

0 30 60 120 180 240 Feet **1 inch = 140 feet**

Prepared By: BC Stormwater Management Utility
Date Print:01/21/20

File:C:\project summaries map\St. Helena Island Tree Removal- Hand Drive and Capt Rojas Rd Map #2_2020-322



Project: St. Helena Island Tree Removal- First Coleman Road Map #3

Activity: Routine/ Preventive Maintenance

Project #: 2020-322

Township/SW Dist: St. Helena Island/8

Completed: October 2019

Legend	
Drainage Type	
	Access Pipe
	Bleeder Pipe
	Channel Pipe
	Channel
	Stream
	Crossline Pipe
	Driveway Pipe
	Lateral
	Lateral Pipe
	River
	Road Pipe
	Roadside
	Roadside Pipe



1 inch = 260 feet

Prepared By: BC Stormwater Management Utility
Date Print: 01/21/20

File: C:\project summaries map\St. Helena Island Tree Removal- First Coleman Rd Map #3_2020-322